

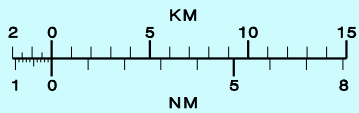
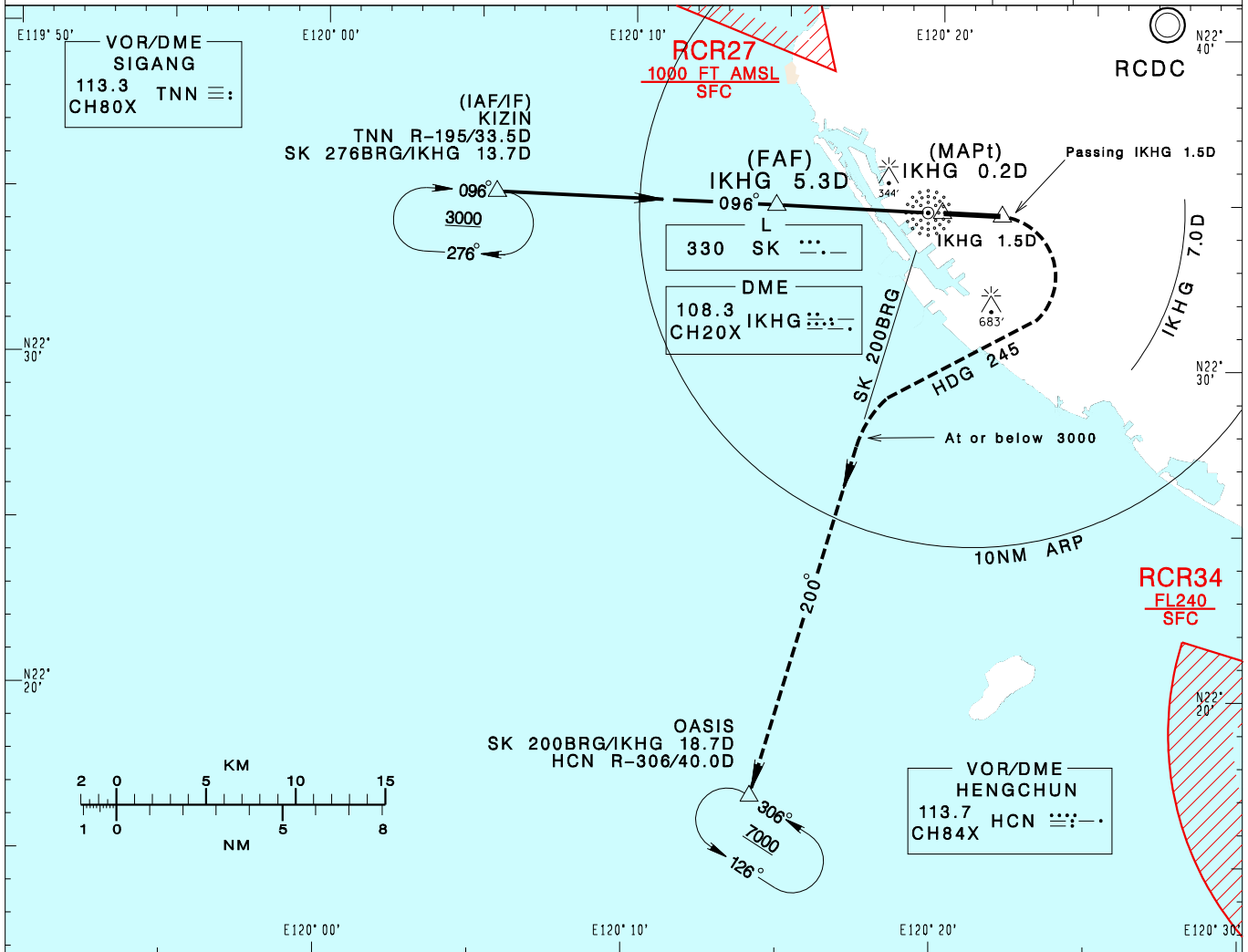
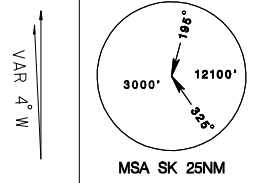
**高雄國際機場**  
KAOHSIUNG INTL AD

RCKH  
NDB RWY09

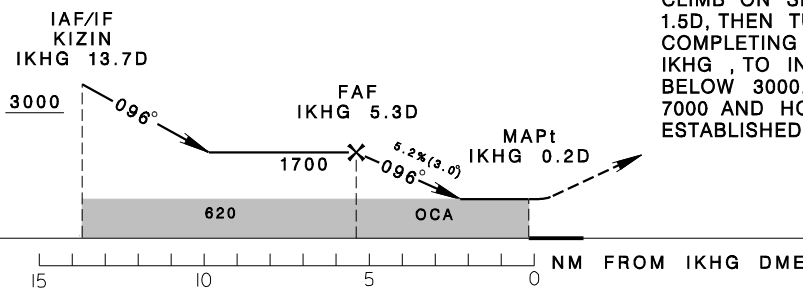
KAOHSIUNG APP 124.7 125.7	KAOHSIUNG TWR 118.7 120.7	ATIS 127.8
------------------------------	------------------------------	---------------

Apt Elev: 32' Rwy09 DTHR Elev: 21' Trans Level: FL130 Trans Alt: 11,000'

BEARINGS ARE MAGNETIC; DISTANCES ARE NAUTICAL MILES; ELEVATIONS, HEIGHTS IN FEET



5DME	4DME	3DME	2DME	DIST to IKHG
1600	1290	970	650	ADVISORY ALT



**MISSED APCH:**  
CLIMB ON SK 096BRG UNTIL PASSING IKHG 1.5D, THEN TURN RIGHT HEADING 245, COMPLETING THE TURN WITHIN 7.0D FROM IKHG, TO INTERCEPT SK 200BRG AT OR BELOW 3000. PROCEED TO OASIS, CLIMB TO 7000 AND HOLD. MAX 230KT IAS UNTIL ESTABLISHED ON TRACK TO OASIS.

MINIMA (OCA IN FT, VIS IN M, OCH IN FT)

CATEGORY	A	B	C	D
STRAIGHT IN	620/1200 RVR1200 599	620/1200 RVR1200 599	620/2000 599	620/2000 599
STRAIGHT IN (ALS OUT)	620/1600 599	620/1600 599	620/2700 599	620/2700 599
CIRCLING	630/1900 598	840/2800 808	1080/3700 1048	1080/4600 1048

NOTE  
1. CIRCLING NOT AUTHORIZED NORTH OF RWY.  
2. CAUTION: A 344-FT FERRIS WHEEL AT 310BRG 1.5NM FROM SK.  
3. ATS SURVEILLANCE REQUIRED.  
\* DME REQUIRED

CHANGES: KW NDB COMPLETELY WITHDRAWN.